

PLUS SERIES EPOXY PUTTY+

DESCRIPTION:

x'traseal® Plus Series Epoxy Putty+ is hand kneadable, specialty two part epoxy putty to work on damp, wet or underwater and diverse materials. It is very easy to use and useful for emergency repairs in industries, workshops, marine, automotive, construction and also for household use. After cured, it can be drilled, sanded, and painted. It contains no solvent or VOC, not flammable and no shrinkage after cure. Rewrap the unmixed material until they are needed for use.

FEATURES:

- ◆ Permanent Repair
- ◆ Underwater Repair
- ◆ Instant Emergency
- ◆ Easy to mix by hand
- ◆ Multipurpose (Sealing, filling, and rebuild)
- ◆ Excellent resistance to hydrocarbons, moisture, saline weather and saline water, oil, minerals, solvents, mild acids and alkalies, etc.

USES:

- ◆ Permanent repair: Leaks, holes, cracks, mounting signs to walls.
- ◆ Suitable Substrates: Metal, fiberglass, concrete, ceramics and some plastic materials. Works in damp, wet and slowly leaking area.

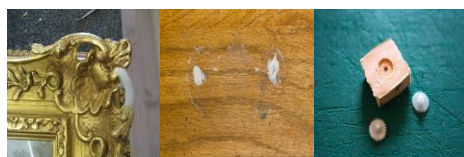
Illustrated Pictures



Pipe sealing

Crack filling

Crack sealing



Rebuild

Nail holes filling

Molding

APPLICATIONS:

- ◆ Cut the required quantity of putty
- ◆ Mix homogenously until mixture gets uniform color
- ◆ Apply immediately on clean surface
- ◆ For best adhesion roughen the surface
- ◆ Wear protective eye glasses & hand gloves whenever necessary

SPECIFICATION:

Colour, Resin Hardener	White Reddish pink
Appearance	Putty
Density	1.9 g/ml
Work Life (Minutes at 25°C)	20 - 30
Curing time (Hours at 25°C)	2.5
Hardness (Shore D)	Minimum 80
Temperature limits	15°C to 120°C
Nonvolatile Content	100%
Lap Shear Strength (kg/cm ²)	Minimum 40
Shelf Life	24 Months ⁽¹⁾

STORAGE:

⁽¹⁾Shelf life is subjected to change due to the type of packaging used and the condition of the environment. Material should be stored in a dry and cool place between +5°C to +30°C.

CAUTION:

Normally, while mixing by hand it does not cause any skin irritation, but in some cases with sensitive skins, it may cause irritation or sensitization. In such cases, wash the hands with plenty of water and soap and use hand gloves for application.

This information is provided in good faith and is believed accurate based on a review of current composition and information supplied by vendors. No warranty is expressed or implied. Liability is expressly disclaimed.

WE RECOMMEND PRELIMINARY COMPATIBILITY TESTS PRIOR TO APPLICATION TO ACHIEVE DESIRABLE RESULTS