



# EPOXY PUTTY

# x'traseal®

## TECHNICAL DATA SHEET

REV: 06

Date: 25 April 2024

### DESCRIPTION

EPOXY PUTTY STICK is a hand kneadable, two parts, co-extruded, fast curing epoxy putty, specially prepared to work on diverse materials. It is very easy to use and useful for emergency repairs in industries, workshops, marine, automotive, construction and also for household use. Good for wet surfaces. After cured, it can be drilled, sanded, and painted. It contains no solvent or VOC, not flammable and no shrinkage after cure. Rewrap the unmixed material until they are needed for use.

### FEATURES

- ◆ Multipurpose
- ◆ Permanent Repair
- ◆ Instant Emergency
- ◆ Underwater Repair
- ◆ Easy to mix by hand
- ◆ Excellent resistance to hydro carbons, moisture, saline weather and saline water, oil, minerals, solvents, mild acids and alkalies, etc.

### USES

- ◆ Permanent repair: Leaks, holes, cracks, mounting signs to walls.
- ◆ Suitable Substrates: Metal, fiberglass, concrete, ceramics and some plastic materials. Works in damp, wet and slowly leaking area.

*Due to a large variety of different coatings and substrates, we recommend preliminary compatibility tests prior to application to achieve desirable results*

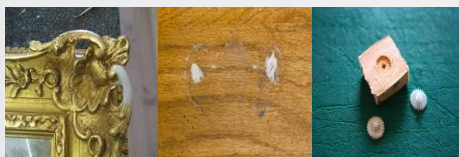
### Illustrated Pictures



Pipe sealing

Crack filling

Crack sealing



Rebuild

Nail holes filling

Molding



# EPOXY PUTTY

# x'traseal®

## TECHNICAL DATA SHEET

REV: 06

Date: 25 April 2024

### APPLICATIONS

- ◆ Cut the required quantity of putty stick.
- ◆ Mix homogenously until mixture gets uniform color.
- ◆ Apply immediately on clean surface.
- ◆ For best adhesion roughen the surface.
- ◆ Wear protective eye glasses & hand gloves whenever necessary.

### SPECIFICATION

Color, Resin Hardener	Green White
Appearance	Putty
Density	1.9 g/ml
Work Life (Minutes at 25°C)	5 - 7
Curing time (Minutes at 25°C)	30
Hardness (Shore D)	Minimum 80
Temperature limits	15°C to 120°C
Nonvolatile Content	100%
Lap Shear Strength (kg/cm <sup>2</sup> )	Minimum 45
Shelf Life	12 Months <sup>(1)</sup>

### STORAGE

- ◆ <sup>(1)</sup>Shelf life is subjected to change due to the type of packaging used and the condition of the environment. Material should be stored in a dry and cool place between +5°C to +30°C.

### CAUTION

- ◆ Normally, while mixing by hand it does not cause any skin irritation, but in some cases with sensitive skins, it may cause irritation or sensitization. In such cases, wash the hands with plenty of water and soap and use hand gloves for application.

*This information is provided in good faith and is believed accurate based on a review of current composition and information supplied by vendors. No warranty is expressed or implied. Liability is expressly disclaimed.*